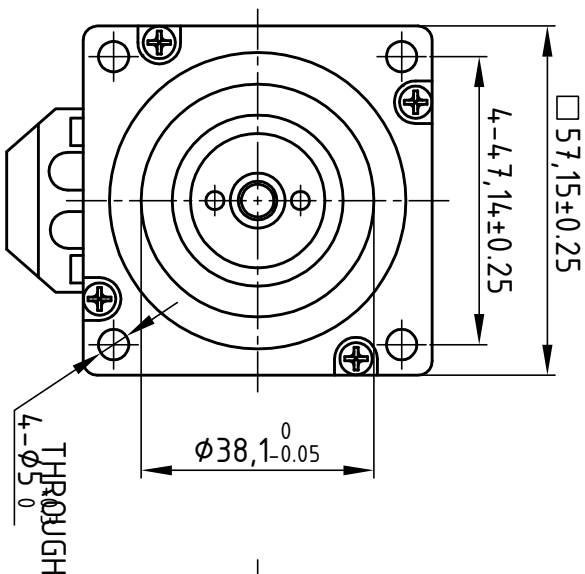


Dimension: (Unit: mm)

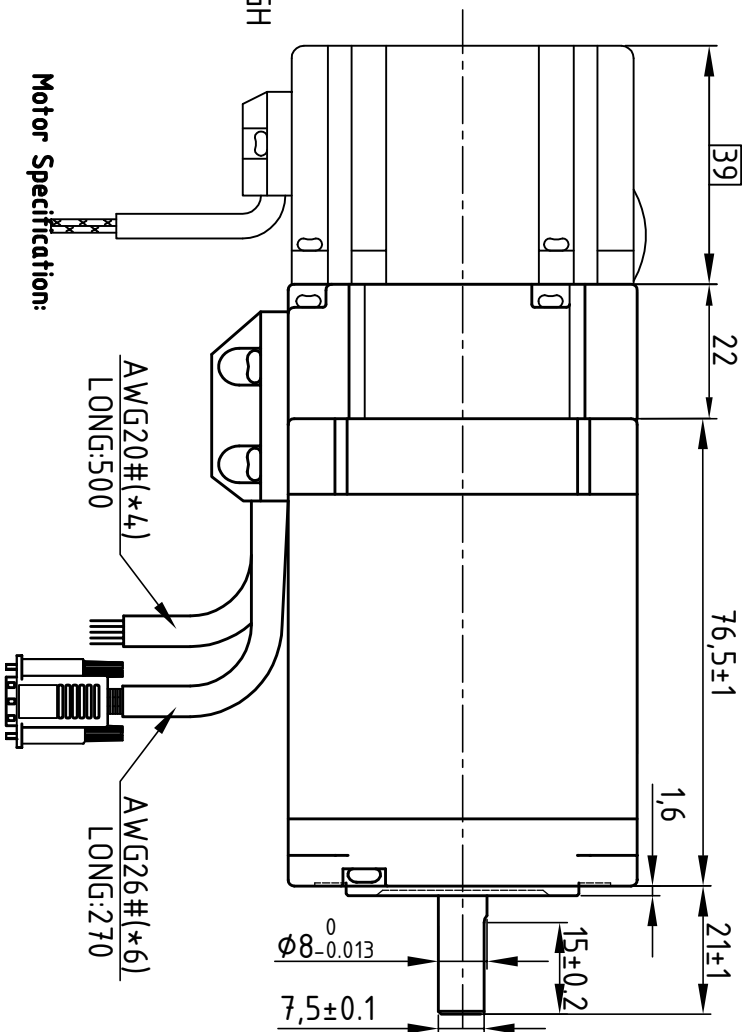


**Common Rating**

Step angle	1.8°
Position accuracy	1.8±0.09°
Dielectric strength	500VAC 1min
Insulation resistance	100MΩhm(500VDC)
Insulation class	B
Temp rise(Max)	80K
Radial play	Max: 0.02mm(load 4.50g)
Axial play	Max: 0.08mm(load 900g)

**Brake Specification:**

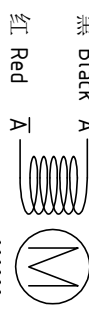
Voltage	24Vdc
Friction torque	2N·M



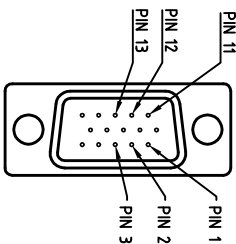
**Motor Specification:**

Current/phase	5 A
Voltage	2.0 V
DC Resistance/phase ±10%	0.4 Ω
Inductance/phase ±20%	1.7 mH
Holding torque	2.3 N·M
Inertia	0.5 kg·cm <sup>2</sup>
Weight	165 kg
Encoder Resolution	1000 cpr

**Motor Connections:**

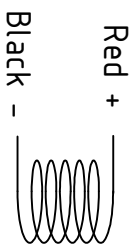


**Encoder Signals**



PIN	1	2	3	11	12	13
颜色	黑	红	白	黄	绿	蓝
定义	A+	VCC	GND	B+	B-	A-

**Brake Connections**



设计 Designed	王洪松	日期 Date	2018.10.19	材料 Material			深圳市雷赛智能控制股份有限公司 SHENZHEN LEADSHINE TECHNOLOGY CO., LTD.
审核 Checked	黄捷建	2018.10.19	2018.10.19	第一角画法 First angle projection			57CME21X-BZ
批准 Approved	黄捷建	2018.10.19	2018.10.19	重量 Weight	比例 Scale	阶段 Stage Mark	带抱闸混合伺服电机
零件号 Part No.				共 1 套 1 of 1	第 1 套 1 of 1	图号 DWG. NO.	LS-CME57-03-0111-05

版本 Rev:	日期 Date	变更文件号 ECU NO.	变更内容 Revisions	设计 By
V1.0	18.10.19		李麒麟	王洪松